



NON DESTRUCTIVE TESTING SOLUTIONS, INC.

# NSpect 210

## Robotic Non-Destructive Inspection System

**Genesis**  
Systems Group, LLC



The NSpect 210 is a two-station, single robotic inspection system designed for the non-destructive inspection industry. The NSpect 210 system addresses the increasing demands for 100% inspection of critical aero-structure carbon-fiber composite components. Combining world-class UT Equipment and KUKA High-Accuracy robots, NDT Solutions, Inc. offers a reliable, highly productive inspection cell.

### ***Productivity***

- Safely load/unload during inspection. No special certification required to operate the machine.
- ASNT certified inspectors can review results remotely and print out inspection reports with no loss of inspection time.
- Demonstrated five-fold reduction in actual inspection time.

### ***Flexibility***

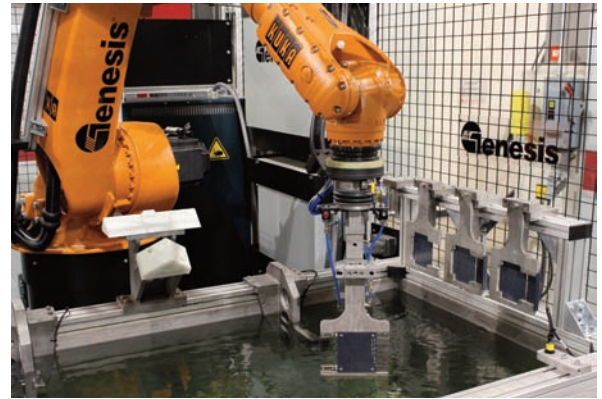
- Complex contour or flat scan
- Configurable station layouts
- Multiple processes integrated into the same system (immersion, squirter and/or bubbler ultrasonic and eddy current capabilities)
- Minimal tooling required

### ***Quality***

- Highly accurate robotic platform
- Detect, locate and annotate multiple types of defects
- Full traceability utilizing bar code reader
- Auto-populated report generation
- Automated reference standard scan

## Standard System Components

- KUKA KR60HA 6-axis robot
- High speed ultrasonic array imaging system
- Two-drawer loading system with bar code scanning
- InspectionWare acquisition and analysis software
- 64-element array (PE) and single pixel in TTU
- Automated reference standard schedule
- Allen Bradley PLC – based controls system
- PC with Windows XP and 1 TB hard drive
- Full wave form capture and remote evaluation
- 72" x 36" x 36" S.S. water tank with filtration system
- RIA-Compliant safety system with interlocked enclosure



## Complete Manufacturing Solution

- Seamless Integration of Robot and NDI Software
- 6-Axis Robot Standard
- In-Tank and Squirter/VACRS NDI Process Ready
- Capable of Single Part or Large Batch Production

## Ultrasonic Equipment Capabilities

- Pulse Echo (PE) and/or Through Transmission (TTU)
- Full Waveform Capture
- A, B, and C-Scan Output

## Reliability

- Pre-Engineered System Design
- Robust System Controls
- Single Source Responsibility
- Industry-Proven System Components
- 24-7 Support Service

## Flexibility

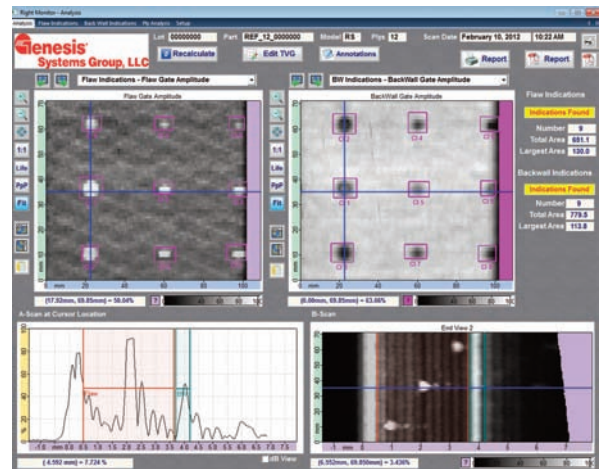
- Automatic Tool Changer System
- "Part to Process" or "Process to Part"
- Reprogrammable, Reconfigurable
- Programs Permanently Stored

## Available System Options

- UT Sensors, Arrays and Tooling
- Automatic Tool Change System
- Tank Fill/Empty Pump System
- VACRS (Variable Automatic Couplant and Recovery System)
- Part Contacting Tooling

## Custom Solutions

NDT Solutions, Inc. specializes in innovative designs and solutions to difficult NDT problems. Let our team of development experts build you a system customized to meet or exceed your expectations.



Genesis Systems Group, LLC: Innovation and Experience from your Single Source. NSpect 210 is a trademark of Genesis Systems Group, LLC.

KUKA is a trademark of KUKA Roboter GmbH, Augsburg, Germany

Genesis Systems Group, LLC and NDTs reserve the right to modify or change the specifications of any of its products without notice and without incurring any responsibility for modifying previously manufactured products.



NDT Solutions, Inc.

10-1 Airport Rd. • New Richmond, WI 54017-2703

Tel: 715.246.0433 • Fax: 715.246.0466 • Email: [sales@ndts.com](mailto:sales@ndts.com)

[www.ndts.com](http://www.ndts.com)