

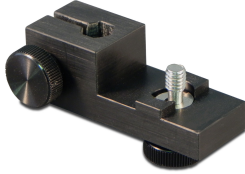


**AUSS Spare Parts Catalog
3/8/2024**

**10-1 Airport Road
New Richmond, WI 54017
Office: 833-999-NDTS (6387)**



Part Number:
10-10-A21
Description:
MAUS / AUSS WHEEL SUPPORT ASSY



Part Number:
10-10-A22
Description:
MAUS / AUSS, WHEEL SUPPORT CLAMP ASSY



Part Number:
10-10-A23
Description:
MAUS / AUSS, ARM ASSY, WHEEL SUPPORT



Part Number:
10-10-A28
Description:
WHEEL SUPPORT (WHEEL ONLY), ASSY



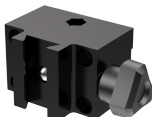
Part Number:
10-128-A21
Description:
SCAN ARM OFFSET BRACKET ASSY WITH 5" SLIDING RANGE



Part Number:
10-14-A21
Description:
MAUS / AUSS, SPRING SLIDE ASSEMBLY WITH 3 & 6 DEGREE ADAPTOR PLATE



Part Number:
10-16-A2101
Description:
SINGLE SENSOR MOUNT ASSY, FOR ALL MAUS / AUSS HAND SCANNERS



Part Number:
10-16-A2220
Description:
MAUS / AUSS, DOVETAIL & HEX ROD BRACKET ASSY



Part Number:
 10-16-A244
Description:
 MAUS / AUSS, SPRING LOADED SENSOR MOUNT FOR
 VARIABLE STROKE SCANNER



Part Number:
 10-16-A271
Description:
 QUICK ATTACH PIN PLATE ASSY



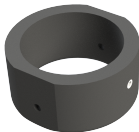
Part Number:
 10-16-A273
Description:
 HOSE WRANGLER MOUNT ASSY, DR 11



Part Number:
 10-16-A274
Description:
 VACRS MANIFOLD ASSY, DR 11, (Can be used with the
 Red / B3 Scanner as well)



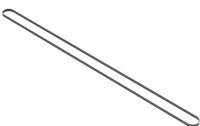
Part Number:
 10-16-A290
Description:
 YOKE, MAUS / AUSS, LARGE DIAMETER SENSOR SHOE
 YOKE ASSY, PITCH / CATCH, VACRS RESONANCE



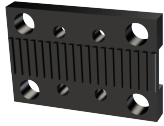
Part Number:
 10-16-A292
Description:
 PITCH & CATCH SENSOR SLEEVE ASSY. 1.5" ID



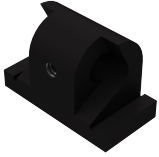
Part Number:
 10-16-A294
Description:
 MAUS / AUSS, DUAL SENSOR YOKE. LONG THROW YOKE



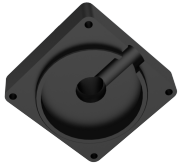
Part Number:
 10-16-A47
Description:
 MAUS / AUSS, VARIABLE STROKE SCANNER, DRIVE BELT



Part Number:
10-16-M216
Description:
RACK BRACKET, BELT CLAMP



Part Number:
10-16-M240
Description:
BRACKET, SENSOR MOUNT



Part Number:
10-16-M25
Description:
BLOCK, MOUNT, RESOLVER HOUSING



Part Number:
10-16-M26
Description:
BASE, RESOLVER HOUSING



Part Number:
10-16-M260
Description:
NUT, PLATE, QUICK ATTACH



Part Number:
10-16-M293
Description:
SLEEVE, 1.50", PITCH & CATCH SENSOR



Part Number:
10-16-M419
Description:
RAIL, AL EXTRUSION, 702MM LONG



Part Number:
10-19-A21
Description:
MAUS / AUSS, (BLACK) FLEXIBLE VACUUM TRACK ASSY,
42" LONG



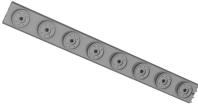
Part Number:
10-19-A213
Description:
MAUS / AUSS, (GREEN) FLEXIBLE VACUUM TRACK ASSY,
42" LONG



Part Number:
10-19-A22
Description:
INLET VALVE ASSY, TRACK ASSY



Part Number:
10-19-A27
Description:
MAUS / AUSS FLEXIBLE TRACK CHECK VALVE ASSY



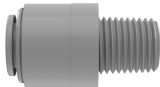
Part Number:
10-19-M210
Description:
MAUS / AUSS, (GREY) FLEXIBLE VACUUM TRACK,
WITHOUT HARDWARE, 42" LONG



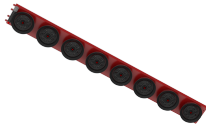
Part Number:
10-19-M211
Description:
MAUS / AUSS, (RED) FLEXIBLE VACUUM TRACK, WITHOUT
HARDWARE, 42" LONG



Part Number:
10-19-M26
Description:
MAUS / AUSS, (BLACK) FLEXIBLE VACUUM TRACK,
WITHOUT HARDWARE, 42" LONG



Part Number:
10-19-P43
Description:
MAUS / AUSS, FLEXIBLE TRACK, INLET VALVE MALE
CONNECTOR



Part Number:
10-21-A21
Description:
MAUS / AUSS, (RED) FLEXIBLE VACUUM TRACK ASSY,
42" LONG



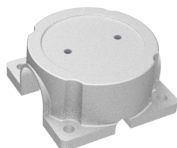
Part Number:
10-22-A21
Description:
MAUSS / AUSS, (GREY) FLEXIBLE VACUUM TRACK ASSY,
42" LONG



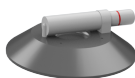
Part Number:
10-23-A21
Description:
VACUUM CUP SAFETY RESTRAINT KIT. INCLUDES:



Part Number:
10-23-A25
Description:
SAFETY RESTRAINT VACUUM CUP.



Part Number:
10-23-A42
Description:
MODIFIED MOUNT, VACUUM CUP



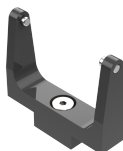
Part Number:
10-23-M14
Description:
PAD, VACUUM, CONCAVE FACE, 6" DIAMETER



Part Number:
10-26-A21
Description:
MAUS / AUSS, GIMBLE RING FOR RESONANCE AND UT
SENSOR SLEEVE



Part Number:
10-26-A22
Description:
MAUS / AUSS, GIMBLE RING FOR RESONANCE SENSOR
VACRS SHOE



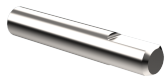
Part Number:
10-27-A21
Description:
MAUS / AUSS, LOW FRICTION YOKE ASSY



Part Number:
10-2-M212
Description:
PLATE, WEAR, CARRIAGE



Part Number:
10-2-M227
Description:
GEAR, SPUR, PIN HUB REMOVED, 18 TEETH, CARRIAGE



Part Number:
10-2-M23
Description:
HANDLE, ENGAGE AND DISENGAGE, CARRIAGE



Part Number:
10-2-M26
Description:
MOUNT, PIN PLATE, QUICK ATTACH. WITHOUT THUMBSCREWS OR QUICK RELEASE PINS.



Part Number:
10-2-M416
Description:
EYEBOLT, SHOULDERLESS, CARRIAGE



Part Number:
10-49-A21
Description:
SENSOR SLEEVE ASSY FOR ALL 1/4" PULSE-ECHO SENSORS



Part Number:
10-49-A214
Description:
DUAL EDDY CURRENT SENSOR SLEEVE ASSY HOLDER.
(Supersedes P / N SPC-292-DH)



Part Number:
10-49-A215
Description:
ASSEMBLY, SPC-292 SINGLE EDDY CURRENT SENSOR HOLDER WITH BRUSH



Part Number:
10-49-A217
Description:
ASSEMBLY, SPC-327 SINGLE EDDY CURRENT SENSOR
HOLDER WITH BRUSH



Part Number:
10-49-A218
Description:
DUAL SENSOR SLEEVE ASSY HOLDER, FOR EDDY CURRENT
SPC-292 & SPC-327 SENSORS



Part Number:
10-49-A22
Description:
MAUS / AUSS, SENSOR SLEEVE ASSY, 7 / 8" ID
SLEEVE FOR 1 / 2"



Part Number:
10-49-A24
Description:
MAUS / AUSS, SENSOR SLEEVE ASSY, 110 & 160 (170)
kHz RESONANCE SENSORS



Part Number:
10-49-A26
Description:
MAUS / AUSS, SENSOR SLEEVE ASSY, 110, 170, 270, &
330 kHz RESONANCE SENSOR



Part Number:
10-49-A28
Description:
MAUS / AUSS, OUTER BUBBLER HOUSING



Part Number:
10-510-C228
Description:
UT SENSOR CABLES FOR THE DR-11 & VSA SCANNERS,
BLACK, 00 LEMO TO MICRODOT, 14" LONG. SOLD EACH



Part Number:
10-510-C253
Description:
CABLE ASSY, DUAL MICRODOT MIA PROBE WITH LEMO



Part Number:
10-510-C277
Description:
UT SENSOR CABLES FOR THE DR-11, BLACK, WITH LEMO TO MICRODOT, 18" LONG



Part Number:
10-52-A21
Description:
MAUS / AUSS, SPRING SLIDE ASSY, HIGH ANGLE 15 & 20 DEGREES



Part Number:
10-540-G1113
Description:
MAUS / AUSS MINI CART "P / N 15-560-G11 has superseded P / N 10-540-G1113*



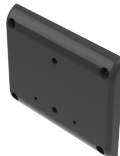
Part Number:
10-540-G1237
Description:
MAUS / AUSS, LATEX, BOOTS FOR UT DRIBBLER ADAPTER, SET OF 12



Part Number:
10-64-A21
Description:
ELECTRIC DUAL VAC ASSY, 115VAC (50 / 60Hz) VERSION. INCLUDES HOSE SET



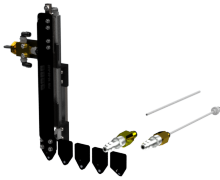
Part Number:
10-70-A21
Description:
YOKE FOR 1-13 / 16" WIDE SENSOR HOLDER & #10-32 MOUNT ASSY



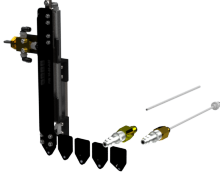
Part Number:
10-7-M23
Description:
HOUSING COVER, HAND ENCODER



Part Number:
10-7-M24
Description:
HANDLE, HAND ENCODER



Part Number:
10-88-A21
Description:
MAUS / AUSS, 4" STROKE AIR SLIDE ASSY, FACTORY NEW



Part Number:
10-88-A22
Description:
MAUS / AUSS, 5" STROKE AIR SLIDE ASSY, FACTORY NEW



Part Number:
10-88-A23
Description:
MAUS / AUSS AIR SLIDE, 4" & 5" PRESSURE HOSE ASSEMBLY



Part Number:
11-107-A21
Description:
MAUS / AUSS, 110 & 170KHz RESONANCE SENSOR VACRS SHOE ASSY



Part Number:
11-107-A23
Description:
MAUS / AUSS, 270kHz RESONANCE SENSOR, VACRS SHOE ASSY



Part Number:
11-11-A21
Description:
VACRS DUAL VAC ASSY



Part Number:
11-34-A21
Description:
VACRS PLUS ASSY



Part Number:
11-510-C231
Description:
POWER SUPPLY, 24V MODIFIED CABLE, 3.5 FT, VACRS



Part Number:
11-5-A21
Description:
VACRS II ASSY



Part Number:
11-5-A210
Description:
PLUG HOSE ASSY, VACRS



Part Number:
11-5-A211
Description:
WIDE VACRS ARRAY YOKE, #8-32 MOUNT ASSY



Part Number:
11-5-A213
Description:
PURGE HOSE ASSY, VACRS



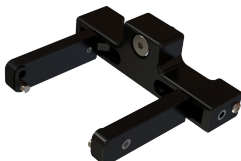
Part Number:
11-5-A223
Description:
LONG YOKE #10-32 MOUNT ASSY



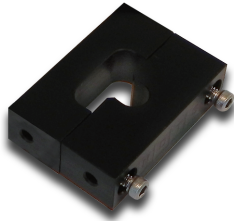
Part Number:
11-5-A234
Description:
LONG YOKE #8-32 MOUNT ASSY, VACRS



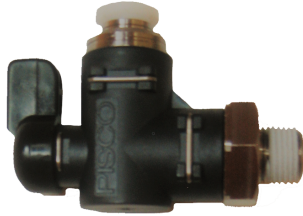
Part Number:
11-5-A24
Description:
VACRS ARRAY SHOE ASSY DESIGNED FOR ARRAY WITH CASE DIMENSIONS OF 3.4" L x 0.500" W x 1.2" T



Part Number:
11-5-A255
Description:
ASSY, ADJUSTABLE YOKE, 1W x 1.5D THROUGH 2W x 2.5D RANGE



Part Number:
11-5-A28
Description:
HOSE WRANGLER, VACRS 02



Part Number:
11-5-A413
Description:
MODIFIED BALL UNION VALVE, VACRS



Part Number:
11-5-M226
Description:
STABILIZER, WATER PUMP INLET CONNECTOR, VACRS



Part Number:
11-5-M25
Description:
BLOCK, 3.2 ARRAY HOLDER, VACRS



Part Number:
11-5-M26
Description:
GASKET, 3.2 ARRAY HOLDER, VACRS



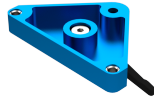
Part Number:
11-5-M27
Description:
PLATE, MOUNTING, 3.2 ARRAY HOLDER, VACRS



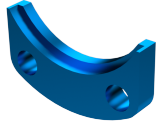
Part Number:
12-25-A21
Description:
MAUS / AUSS, DUAL VAC ASSY, WITH 2 HOSES



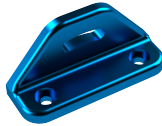
Part Number:
12-25-A24
Description:
16' HOSE ASSY, DUAL VAC



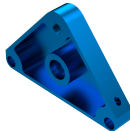
Part Number:
15-3-A25
Description:
QUICK ATTACH PIVOT ASSY, CARRIAGE, AUSS MOBILE



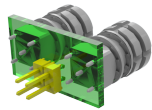
Part Number:
15-3-M212
Description:
CLAMP, ENCODER, CARRIAGE



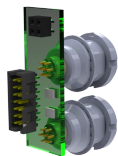
Part Number:
15-3-M214
Description:
MOUNT, CARRIAGE



Part Number:
15-3-M215
Description:
MOUNT, TRIANGULAR, CARRIAGE



Part Number:
15-4-A27
Description:
PCB ASSY, 00 LEMO P / N EPE.00.250.NTN, VSA
SENSOR MANIFOLD



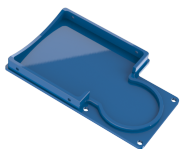
Part Number:
15-4-A28
Description:
PCB ASSY, 7 PIN LEMO P / N EEG.1B.307.CLN, VSA
SENSOR MANIFOLD



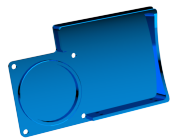
Part Number:
15-4-M210
Description:
COVER, MOTOR HOUSING



Part Number:
15-4-M212
Description:
BASE, MOTOR HOUSING



Part Number:
15-4-M214
Description:
TOP, CAP, MOTOR HOUSING



Part Number:
15-4-M215
Description:
BOTTOM, CAP, MOTOR HOUSING



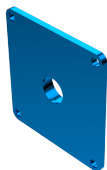
Part Number:
15-4-M216
Description:
TOP, MOTOR HOUSING



Part Number:
15-4-M217
Description:
TUBE, MOTOR HOUSING



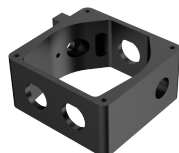
Part Number:
15-4-M218
Description:
TUBE, ENCODER HOUSING



Part Number:
15-4-M219
Description:
BOTTOM, CAP, ENCODER HOUSING



Part Number:
15-4-M220
Description:
TOP, CAP, ENCODER HOUSING



Part Number:
15-4-M221
Description:
TOP, ENCODER HOUSING



Part Number:
15-4-M222
Description:
COVER, ENCODER HOUSING



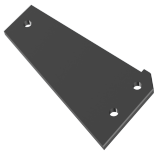
Part Number:
15-4-M223
Description:
MANIFOLD, COMPRESSED AIR & H2O, SENSOR MANIFOLD



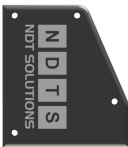
Part Number:
15-4-M224
Description:
BRACKET, U-CHANNEL, SENSOR MANIFOLD



Part Number:
15-4-M225
Description:
HOUSING, SINGLE SENSOR CONNECTORS, SENSOR MANIFOLD



Part Number:
15-4-M226
Description:
COVER, TOP, SINGLE SENSOR CONNECTORS HOUSING,
SENSOR MANIFOLD



Part Number:
15-4-M227
Description:
COVER, SIDE, SINGLE SENSOR CONNECTORS HOUSING,
SENSOR MANIFOLD



Part Number:
15-4-M228
Description:
BRACKET, ANGLE, SENSOR MANIFOLD



Part Number:
15-4-M229
Description:
BRACKET, VERTICAL CONNECTOR, LINEAR MOTION



Part Number:
15-4-M234
Description:
RAIL, AL EXTRUSION, RELIEF CUTS, 702MM LENGTH



Part Number:
15-510-C2128
Description:
CABLE, CONTROL, AUSS MOBILE, 16' LONG



Part Number:
15-510-C2130
Description:
CABLE, ENCODER, CARRIAGE, AUSS MOBILE



Part Number:
15-510-C2141
Description:
CABLE ASSY, AUSS MOBILE IPEX TO VSA SCANNER, 16' LONG. *PULSE ECHO ONLY*



Part Number:
15-510-C2142
Description:
Cable Assy, VSA Scanner to AUSS Mobile, 41 Pin, 16' Long *RES, ET, MIA, P / C*



Part Number:
15-510-C2144
Description:
CONTROL CABLE ASSY, HANDSCANNER TO AUSS, 15' LONG



Part Number:
15-510-C2145
Description:
CABLE ASSY, RESONANCE PROBE, 7-PIN LEMO + RESISTOR TO MICRODOT, 14" LONG



Part Number:
15-510-C2151
Description:
EXTENSION CABLE, EDDY CURRENT SENSOR, AUSS MOBILE, 16' LONG



Part Number:
15-510-C2152
Description:
EXTENSION CABLE, CONTROL, AUSS MOBILE, 16' LONG



Part Number:
15-510-C2153
Description:
EXTENSION CABLE ASSY, AUSS MOBILE IPEX TO VSA
SCANNER, 16' LONG, *PULSE ECHO ONLY*



Part Number:
15-520-E26
Description:
AUSS-MOBILE LAPTOP CONTROLLER, RUGGEDIZED, WIN
10, MS OFFICE, IMAGIN, FULL LICENSE KEY.



Part Number:
15-540-A12
Description:
AUSS MOBILE VSA 25 SCANNER SHIPPING CASE WITH
CUSTOM FOAM, FACTORY NEW



Part Number:
15-540-A13
Description:
AUSS MOBILE CHASSIS AND CONTROLLER SHIPPING CASE
WITH CUSTOM FOAM, FACTORY NEW



Part Number:
15-5-A21
Description:
AUSS-MOBILE, ALL INSPECTION MODES. INCLUDES
CONTROLLER WITH WIN10 OS, AUSS MOBILE & IMAGIN SOFTWARE



Part Number:
15-5-A210
Description:
MAUS / AUSS, VACRS II, COUPLANT DELIVERY /
RECOVERY SUBSYSTEM FOR PAUT, PE UT, & RESONANCE INSP



Part Number:
15-5-A212
Description:
AUSS, MINI HAND SCANNER, USED WITH ULTRASONIC
ARRAY'S, INCLUDES WIDE "INDEX" YOKE ASSY, AND



Part Number:
15-5-A213
Description:
PANEL MOUNT, IPEX CONNECTOR ASSY



Part Number:
15-5-A22
Description:
AUSS, VARIABLE STROKE SCANNER AND TRACK ASSEMBLY,
KIT. 25" Max. Stroke.



Part Number:
15-5-A23
Description:
MAUS / AUSS, PE ULTRASONIC SENSOR SET: 4ea PE
TRANSDUCERS, 4ea SENSOR CABLES, 4 ea SLEEVES



Part Number:
15-5-A24
Description:
AUSS, RESONANCE SENSOR SET: 110kHz AND 170 kHz,
INCLUDES 2 TRANSDUCER HOLDERS & 2 COAXIAL CABLES



Part Number:
15-5-A25
Description:
AUSS RESONANCE SENSOR SET: 270 kHz and 320 kHz,
INCLUDES TRANSDUCER HOLDERS & 2 COAXIAL CABLES



Part Number:
15-5-A26
Description:
AUSS, EDDY CURRENT SENSOR SET: 1ea. 1-20kHz and
1ea. 5-50kHz, WITH PROBE HOLDERS



Part Number:
15-5-M213
Description:
HOUSING, HAND ENCODER



Part Number:
15-5-M236
Description:
FRONT MOUNT PLATE, HAND ENCODER



Part Number:
99-16-M147
Description:
MAUS / AUSS, PULLEY, FOR MOTOR AND RESOLVER



Part Number:
99-510-C279
Description:
CABLE ASSY, NDT INSTRUMENT CABLE, 00 LEMO TO MICRODOT, 6FT



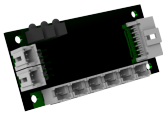
Part Number:
99-520-E115
Description:
SWITCH, SELECTOR, 2 DIRECTION, GREEN LED, 22MM



Part Number:
99-520-E116
Description:
PUSH BUTTON SWITCH, LAMP MODULE, SCREWCLAMP TERMINATION



Part Number:
99-520-E117
Description:
BLOCK, MOUNT COLLAR, SCREW CLAMP TERMINATION, 22MM



Part Number:
99-520-E1424
Description:
CONTROL BOARD, REMOTE SCANNER, ASGA-CCA-0013



Part Number:
99-520-E1425
Description:
SWITCH, PUSH BUTTON, BLACK, N / O FASTON TERMINALS, HALF SHROUD



Part Number:
99-520-E1426
Description:
SWITCH, PUSH BUTTON, RED, N / O FASTON TERMINALS, HALF SHROUD



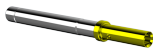
Part Number:
99-520-E1428
Description:
CONN, 38999 COMP, RECEPTACLE, PIN, 15/D 19 19#20



Part Number:
99-520-E1429
Description:
CONN, 38999 COMP, RECEPTACLE, PIN, 13/C 98 10#20



Part Number:
99-520-E1430
Description:
CONN, 38999 COMP, RECEPTACLE, PIN, 17/E 26 26#20



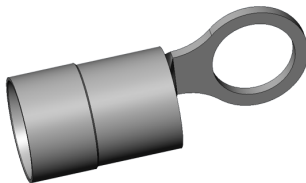
Part Number:
99-520-E1433
Description:
CONTACT, SOCKET, CRIMP, 20-24 AWG, M39029/106-615



Part Number:
99-520-E1476
Description:
GEARMOTOR, 3242G024CR+30/1 14:1+MG10



Part Number:
99-520-E16
Description:
GEARMOTOR, 3540K024C158+30/1 246:1+MG10



Part Number:
99-520-E180
Description:
TERMINAL, RING, CRIMP-ON NYLON INSULATED, 26-22 WIRE GAGE



Part Number:
99-530-F118
Description:
SCREW, CAP, SKT HD, SHLDR, 0.3125-18 X 0.3130



Part Number:
99-530-F122
Description:
SCREW, CAP, FLAT HD, #8-32 X 0.875 LG, 316 SST



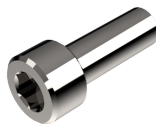
Part Number:
99-530-F123
Description:
SCREW, CAP, FLAT HD, #8.32 X 1.500 LG, 18-8 SST



Part Number:
99-530-F128
Description:
#10-32 SHOULDER BOLT FOR DR-11 & VSA CARRIAGE BEARING ASSY



Part Number:
99-530-F145
Description:
YOKE SHOULDER BOLT, #8-32



Part Number:
99-530-F158
Description:
SCREW, CAP, SKT HD, #4-40 X 0.313 LG, 18-8 SST, PLAIN FINISH, COMPLIANT



Part Number:
99-530-F17
Description:
SCREW, CAP, BUTTON HEAD, #6-32 X 0.250 LG, 316 SST



Part Number:
99-532-F110
Description:
WASHER, FLAT, 0.172 ID X 0.375 OD X 0.06 THICK, 18-8



Part Number:
99-532-F16
Description:
WASHER, FLAT, 0.500 OD X 0.266 ID X 0.040 THK, 316 SST



Part Number:
 99-534-F16
Description:
 NUT, HEX, #8-32 X 0.125 THICK, 316 SST



Part Number:
 99-534-F20
Description:
 NUT, HEX, 1/4-20 X 0.188 THICK, 316 SST



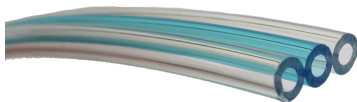
Part Number:
 99-540-G110
Description:
 TUBE, ROUND, FLEXIBLE, 0.375 OD X 0.250 ID X 0.06



Part Number:
 99-540-G1134
Description:
 TUBE, SOLDER & SHIELD, SHIELD TERMINATOR, 2.7MM ID X 18.25MM



Part Number:
 99-540-G1135
Description:
 TUBE, SHRINK, 2 TO 1 SHRINK RATIO, 0.500 ID BEFORE SHRINKING



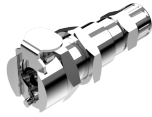
Part Number:
 99-540-G129
Description:
 TUBE, TRIPLE ROUND, FLEXIBLE, 0.250 OD X 0.125 ID. SOLD BY THE FOOT.



Part Number:
 99-540-G151
Description:
 TUBE, ROUND, FLEXIBLE, 0.250 OD X 0.125 ID X 0.063



Part Number:
 99-540-G19
Description:
 MAUS / AUSS, SCAN ARM DRIVE BELT. SOLD BY THE FOOT



Part Number:
99-560-M110
Description:
COUPLING, SOCKET, QUICK-DISCONNECT, SHUTOFF VALVE, 0.125



Part Number:
99-560-M126
Description:
SPRING, COMPRESSION, 0.043 WIRE DIAMETER X 0.406 HOLE DIAMETER



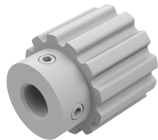
Part Number:
99-560-M132
Description:
HANDLE, ADJUSTABLE, 0.250-20 X 0.750 STUD, BLACK NYLON



Part Number:
99-560-M1360
Description:
FITTING, STRAIN RELIEF, M16 X 1.5 THREAD X 3.07 BODY LENGTH, CABLE



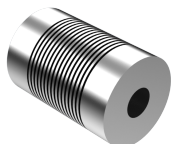
Part Number:
99-560-M139
Description:
PIN, DOWEL, 0.125 OD X 0.625 LG, 316 SST



Part Number:
99-560-M142
Description:
PULLEY, TIMING, 5.08 MM PITCH X 12 TEETH



Part Number:
99-560-M143
Description:
SPACER, SHAFT, 0.250 ID X 0.375 OD X 0.250 LG, AL



Part Number:
99-560-M144
Description:
MAUS / AUSS, SC SERIES FLEXIBLE SHAFT COUPLING RESOLVER COUPLING



Part Number:
99-560-M145
Description:
MAUS / AUSS, CARRIAGE DRIVE BELT



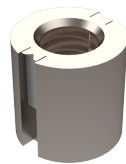
Part Number:
99-560-M148
Description:
O-RING, SQUARE CROSS SECTION, 0.750 ID X 1.000 OD



Part Number:
99-560-M152
Description:
MAUS / AUSS, YOKE TO PLATE SPACER



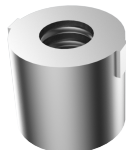
Part Number:
99-560-M154
Description:
THREADED INSERT, NON-LOCKING, #6-32 ID X #12-28 OD



Part Number:
99-560-M155
Description:
THREADED INSERT, LOCKING, #10-32 ID X 0.3125-18 OD



Part Number:
99-560-M158
Description:
MAUS / AUSS PIN, PUSH BUTTON, QUICK RELEASE,
0.375-24 X 0.375 THRD LG X 1.250 LG, SS



Part Number:
99-560-M172
Description:
4-40 KEENSERT, MINIATURE, NON-LOCKING S / S, EXT
THD= #10-32



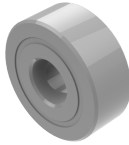
Part Number:
99-560-M184
Description:
MAUS / AUSS, CARRIAGE FLANGED DRIVE PULLEY



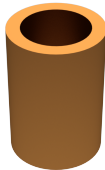
Part Number:
99-560-M186
Description:
PIN, DOWEL, 0.125 OD X 0.375 LG, 316 SST



Part Number:
99-560-M2157
Description:
SPRING BOLT, W/ SHLDR, #6-32



Part Number:
99-562-B12
Description:
BEARING, BALL, DOUBLE SHIELDED, 0.1875 ID X 0.500 OD



Part Number:
99-562-B13
Description:
BEARING, SLEEVE, 0.313 ID X 0.438 OD X 0.625, LENGTH



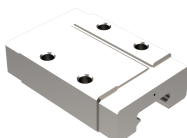
Part Number:
99-562-B15
Description:
MAUS / AUSS, RESOLVER SHAFT, BEARING



Part Number:
99-562-B16
Description:
BEARING, SLEEVE, FLANGED, 0.250 ID, SINTERED BRONZE



Part Number:
99-562-B19
Description:
BEARING, BALL, DBL SHIELDED, 0.1875 ID, .375 OD, WIDTH .1250



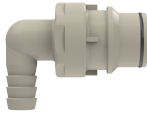
Part Number:
99-563-B11
Description:
BEARING, BALL, TRUCK, 9MM WIDE LINEAR SLIDE



Part Number:
99-570-A4195
Description:
MODIFIED PUMP, VACUUM, TWO THRU-FLOW SILENCERS
CUT TO LENGTH



Part Number:
99-570-P1110
Description:
BARB, HOSE, SLIM LINE, .0625" ID, 303 SST



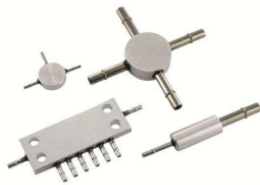
Part Number:
99-570-P1113
Description:
PLUG, BARBED 90 DEG ELBOW, 0.375 CPLG X 0.750



Part Number:
99-570-P1121
Description:
FILTER, WATER, INLINE, 250 MICRON, FOR 0.375 T



Part Number:
99-570-P1113
Description:
TUBE, ROUND, FLEXIBLE, 0.250 OD X 0.170 ID X 0.040



Part Number:
99-570-P1130
Description:
TUBULATION, 0.035 ID X 0.061 OD X 0.551, SST



Part Number:
99-570-P1131
Description:
HOUSING, T-STRAINER, 0.375 FNPT PORT, MESH SIZE



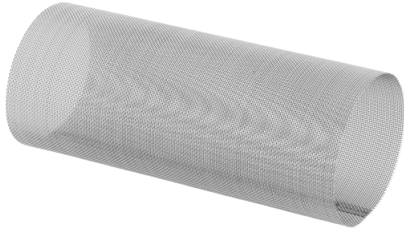
Part Number:
99-570-P1132
Description:
VACRS O2 REPLACEMENT FILTER, POLYPROPYLENE
CARTRIDGE



Part Number:
99-570-P116
Description:
WYE, PUSH TO CONNECT, 0.250 TUBE OD X 0.156 TUBE



Part Number:
99-570-P119
Description:
SUCTION CUP, AL INSERT, BLK POLYURETHANE



Part Number:
99-570-P1202
Description:
REPLACEMENT MESH STRAINER SCREEN FOR THE VACRS= & VACRS DUAL VAC



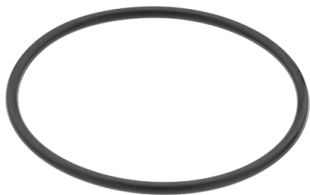
Part Number:
99-570-P1216
Description:
SMALL O-RINGS FOR VACRS HOSE CONNECTORS. 5 / 16" OD x 3 / 16" ID



Part Number:
99-570-P1217
Description:
LARGE O-RINGS FOR VACRS HOSE CONNECTORS. 7 / 16" OD x 5 / 16" ID



Part Number:
99-570-P1230
Description:
ELBOW, MALE PIPE SWIVEL 90 DEG PUSH TO CONNECT, #10-32 X 0



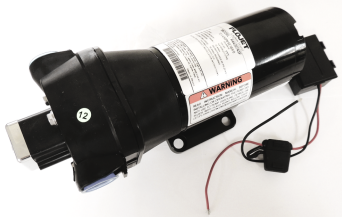
Part Number:
99-570-P1235
Description:
SEAL, 4.625 DIA, REPLACEMENT FOR NDTs PART# 99-570-P1122



Part Number:
99-570-P1236
Description:
SEAL, 3/8 NPT T-STRAINER, REPLACEMENT



Part Number:
99-570-P1263
Description:
O-RING, ROUND CROSS SECTION, DUAL VAC
REPLACEMENT, 0.070 W X



Part Number:
99-570-P1264
Description:
PUMP, WATER, VARIABLE SPEED DIAPHRAM, 12V OR 24V,
4.5 GPM



Part Number:
99-570-P132
Description:
ADAPTOR, MALE PIPE PUSH TO CONNECT, #10-32 UNF X 0



Part Number:
99-570-P1369
Description:
COUPLING, PLUG, QUICK-DISCONNECT, NON-VALVED,
0.125 CPLG X 0



Part Number:
99-570-P1370
Description:
ELBOW, MALE PIPE SWIVEL 90 DEG PUSH TO CONNECT,
M5 X 6MM TUBE



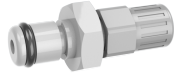
Part Number:
99-570-P1371
Description:
ADAPTER, MALE PIPE PUSH TO CONNECT, M5 X 0.8 MALE
X 0.250 TUBE DIA



Part Number:
99-570-P1372
Description:
ADAPTER, STRAIGHT, PUSH-TO-CONNECT, 0.156 OD TUBE
X 0.250 MN



Part Number:
99-570-P1373
Description:
COUPLING, SOCKET, QUICK-DISCONNECT, VALVED, 0.125
CPLG X 0.3



Part Number:

99-570-P1374

Description:

COUPLING, PLUG, QUICK-DISCONNECT, NON-VALVED,
0.125 CPLG X 0



Part Number:

99-570-P1376

Description:

VALVE, NEEDLE, CARTRIDGE MOUNT, NITRILE SEAL,
KNURLED KNOB



Part Number:

99-570-P142

Description:

ADAPTOR, MALE PIPE SWIVEL 90 DEG PUSH TO CONNECT

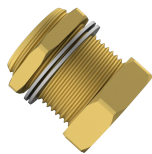


Part Number:

99-570-P143

Description:

TEE, BRANCH, PUSH TO CONNECT, 0.250 NPT X 0.250 TU



Part Number:

99-570-P144

Description:

COUPLING, PANEL MOUNT, 0.250 NPT ID X 0.750-20 OD



Part Number:

99-570-P145

Description:

GAUGE, VACUUM, PANEL MOUNT, 30 TO 0 IN OF HG X
0.125



Part Number:

99-570-P147

Description:

COUPLING, QUICK DISCONNECT, PANEL MOUNT, VALVED



Part Number:

99-570-P148

Description:

ADAPTOR, QUICK DISCONNECT COUPLING FOR AIR, 0.250
NPT X 0.250



Part Number:
99-570-P149
Description:
ELBOW, FEMALE PIPE SWIVEL 90 DEG PUSH TO CONNECT



Part Number:
99-570-P16
Description:
REGULATOR, MINIATURE, M5 X .8



Part Number:
99-570-P173
Description:
PLUG, MALE PIPE TUBE SOCKET, 0.250 CPLG X 0.438 PL



Part Number:
99-570-P174
Description:
PLUG, MALE PIPE TUBE SOCKET, 0.125 CPLG X 0.313 PL



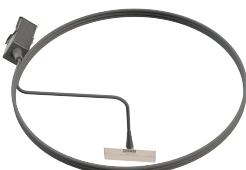
Part Number:
99-570-P179
Description:
REGULATOR, FLOW, 0.250 TUBE X 0.250 TUBE



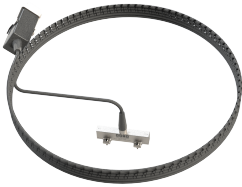
Part Number:
99-570-P182
Description:
TUBE, ROUND, FLEXIBLE, 0.125 OD X 0.0625 ID X 0.031



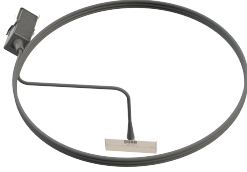
Part Number:
99-570-P184
Description:
O-RING, SQUARE CROSS SECTION, 0.688 ID X 0.813 OD



Part Number:
99-580-S164
Description:
UT LINEAR ARRAY, 5MHz, 64 ELE, .050" PITCH, .315 ELEV, .500" HW DELAY, IPEX, 15' CABLE



Part Number:
99-580-S168
Description:
UT LINEAR ARRAY, 5 MHz, 64 ELE, .050" PITCH,
.315" ELEV, NO DELAY, WITH MOUNT TABS, IPEX, 15' CABLE



Part Number:
99-580-S169
Description:
UT LINEAR ARRAY, 5 MHz, 64 ELE, .050" PITCH,
.315" ELEV, .750" HW DELAY, IPEX, 15' CABLE



Part Number:
99-580-S170
Description:
MECHANICAL IMPEDANCE MODE PROBE MEDIUM TIP 1/2 DIA



Part Number:
99-580-S171
Description:
UT LINEAR ARRAY, 5 MHz, 10 ELE, .025" PITCH,
.500" HW DELAY, IPEX, 15' CABLE



No Image Available

Part Number:
99-580-S187
Description:
UT LINEAR ARRAY, 5 MHz, 10 ELE, .025" PITCH,
.500" HW DELAY, IPEX, 40' CABLE



Part Number:
99-590-Z13
Description:
SPRING, COMPRESSION, 0.480 OD X 0.625 FREE LENGTH



Part Number:
99-590-Z14
Description:
SPRING, EXTENSION, .250 OD X .037 WIRE DIAMETER



Part Number:
99-590-Z17
Description:
SPRING, TORSION, LH WOUND MAUS / AUSS SENSOR
MOUNTS



Part Number:
99-590-Z18
Description:
SPRING, TORSION, RH WOUND MAUS/AUSS SENSOR MOUNTS



Part Number:
AE02911
Description:
170 kHz RESONANCE SENSOR FACTORY NEW, COC INCLUDED



Part Number:
AE02912
Description:
320 kHz RESONANCE SENSOR FACTORY NEW, COC INCLUDED



Part Number:
AE02913
Description:
270 kHz RESONANCE SENSOR FACTORY NEW, COC INCLUDED



Part Number:
AE02914
Description:
110 kHz RESONANCE SENSOR FACTORY NEW, COC INCLUDED



Part Number:
RDG012TM
Description:
TRANSDUCER, HIGH RESOLUTION, 1 MHz, 0.250" DIA,
REMOVABLE DELAY LINE, TOP MOUNT MICRODOT CONNECTOR DIA



Part Number:
RDG022TM
Description:
TRANSDUCER, HIGH RESOLUTION, 2.25MHz, 0.250" DIA,
REMOVABLE DELAY LINE, TOP MOUNT MICRODOT CONNECTOR



Part Number:
RDG052TM
Description:
TRANSDUCER, HIGH RESOLUTION, 5 MHz, 0.250" DIA,
REMOVABLE DELAY LINE, TOP MOUNT MICRODOT CONNECTOR



Part Number:
 RDG102TM
Description:
 TRANSDUCER, HIGH RESOLUTION, 10 MHz, 0.250" DIA,
 REMOVABLE DELAY LINE, TOP MOUNT MICRODOT CONNECTOR



Part Number:
 RDG152TM
Description:
 TRANSDUCER, HIGH RESOLUTION, 15 MHz, 0.250" DIA,
 REMOVABLE DELAY LINE, TOP MOUNT MICRODOT CONNECTOR



Part Number:
 RDL2-.500
Description:
 0.250" DIAMETER DELAY LINE .500" LONG (Set of 5)



Part Number:
 RDL2-0.75
Description:
 0.250" DIAMETER DELAY LINE 0.75" LONG (set of 5)



Part Number:
 RDL2-1.00
Description:
 0.250" DIAMETER DELAY LINE 1.00" LONG (set of 5)



Part Number:
 RDL2-1.25
Description:
 0.250" DIAMETER DELAY LINE 1.25" LONG (set of 5)



Part Number:
 SPC-292-3A/1K
Description:
 MAUS / AUSS, 1-20KHz LOW FREQUENCY EDDY CURRENT
 SENSOR PROBE



Part Number:
 SPC-292-3A/50K
Description:
 MAUS / AUSS, EDDY CURRENT SENSOR PROBE, HIGH
 FREQUENCY, REFLECTION, 50-500kHz



Part Number:

SPC-292-3A/5K

Description:

MAUS / AUSS, 5-50kHz LOW FREQUENCY EDDY CURRENT SENSOR PROBE



Part Number:

SPC-327/100-10K

Description:

MAUS / AUSS, LOW FREQUENCY EDDY CURRENT PROBE (100Hz - 10kHz)



Part Number:

SPC-327/100-1K

Description:

MAUS / AUSS, LOW FREQUENCY EDDY CURRENT PROBE (100Hz - 1kHz)



Part Number:

SPC-327/100-500HZ

Description:

MAUS / AUSS, LOW FREQUENCY EDDY CURRENT PROBE (100Hz - 500Hz)